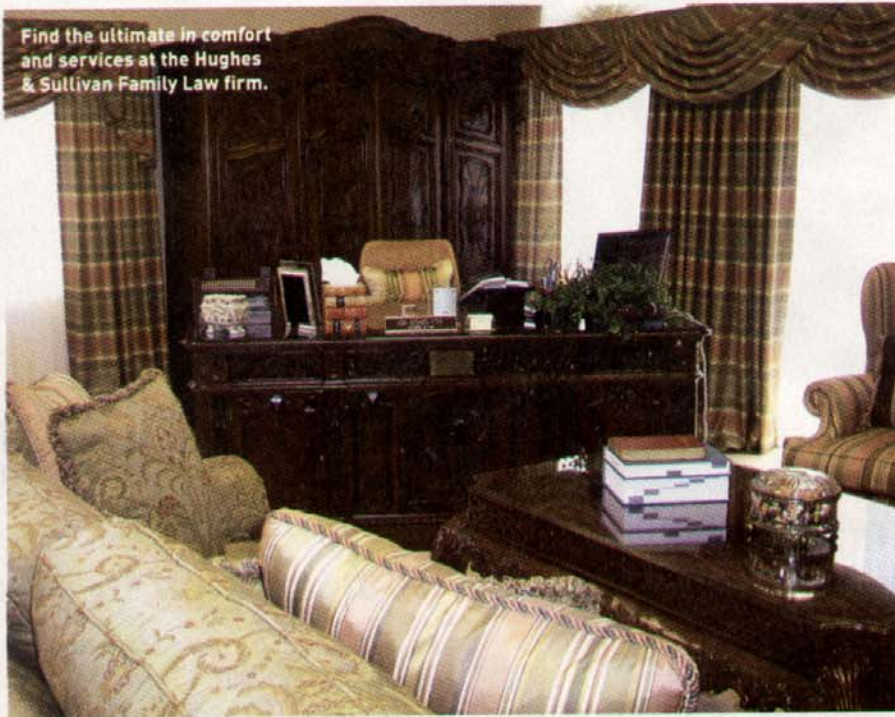


WORK SPACE

Welcome home

Find the ultimate in comfort and services at the Hughes & Sullivan Family Law firm.



An earful

"The fastest growing entrepreneurship seeking counseling are in minority-owned and women-owned businesses."

Christopher Lorenzana, business development director for the Small Business Administration's Santa Ana office

"Yes, the economy is down, but we've still got 3 million people in Orange County. There is still plenty of money here. Orange County provides a strong market for those willing to take advantage of it."

Enrique Perez, executive director of business development for the Rancho Santiago Community College District

"No one knew much about the Internet back in the early '90s."

Debbie Carman, founder of Web-based Faux Paw Productions

"[Social media] is sort of blurring the boundary between consumers and producers."

Eric Baumer, a UC Irvine doctoral candidate who led a study exploring the phenomenon of Web-logging from a reader's point of view

The Hughes & Sullivan Family Law firm may be a traditional practice, but it's certainly not a traditional office – it's more like a traditional home.

Near Old Town Tustin, the work space was designed to evoke a sense of familiarity and comfort. It features a fireplace and two kitchens, with overstuffed furniture and a color palette of muted tones. Oil paintings in ornate gold frames dress the lobby and meeting areas. And every room has its own jar of jellybeans, which mirror the colors of the flowers blooming around the outside of the Mediterranean-style building.

In Hughes & Sullivan's education center, you'll find more than a standard whiteboard and tablet desks – there are also armchairs and a big-screen TV, making for an inviting place for employees and visiting groups to meet and learn.

Adding to the intimate feeling of the office is the attorneys' practice of sitting side-by-side with their clients. Large, soft couches and mahogany coffee tables create a sense of warmth, and "trial assistants," (non-threatening bodyguard types) provide a sense of security.

Professional and homey is a difficult balance, especially in a law office. In this case, Hughes & Sullivan Family Law has created just that – a space where the client feels welcome, secure and at ease. hughesandsullivan.com

HAVE A COOL WORK SPACE? EMAIL: SBELKNAPP@CHURMMEDIA.COM